

Post Graduate Programme in Data Science and Machine Learning  
in association with TCS iON



# SHARP MIND LEADS

**MET**

**Bhujbal Knowledge City**

**MET INSTITUTE OF  
SOFTWARE DEVELOPMENT AND RESEARCH**



**Mahatma Jyotiba Phule**  
(1827-1890)



**Shrimati Savitribai Phule**  
(1831-1897)

विद्येविना मती गेली मतीविना नीती गेली ।  
नीतीविना गती गेली । गतीविना वित्त गेले ॥  
वित्ताविना शुद्र खचले । इतके अनर्थ एका अविद्येने केले ॥  
- महात्मा ज्योतिबा फुले

Lack of knowledge leads to indiscretion;  
Indiscretion leads to lack of ethics.

Lack of ethics leads to absence of direction and momentum;  
Absence of direction and momentum result in bankruptcy.  
Such is the havoc caused by the lack of knowledge.

- Mahatma Jyotiba Phule

## OUR FAITH

न चौर हार्यम् नच राज हार्यम् |  
न भ्रातृभाज्यम् नच भारकारी ||  
व्यये कृते वर्धते एव नित्यम् |  
विद्याधनं सर्वधन प्रधानम् ||

Knowledge can neither be stolen by a thief,  
nor snatched by a king.  
It is indivisible unlike ancestral property,  
it never burdens the bearer,  
it multiplies manifold when offered to others.  
Knowledge is the supreme form of wealth.

## OUR VISION

To shape professionals, to conquer the present and future challenges  
to the socio economic fabric of our society,  
by institutionalising search, development, research and dissemination  
of relevant knowledge through structured learning systems.

## OUR MISSION

To evolve, develop and deliver dynamic learning systems to equip  
professionals with conscience and commitment to excellence and  
courage to face business challenges.

# CONTENTS

MUMBAI EDUCATIONAL TRUST	1
FROM THE CHAIRMAN'S DESK	2
FROM THE TRUSTEE	3
ADVANTAGE MET	4
ABOUT MET ISDR	5
ABOUT TCS iON	6
PGP IN DATA SCIENCE & MACHINE LEARNING	7
THE INDUSTRY PERSPECTIVE	8
STRUCTURE OF PROGRAMME & HIGHLIGHTS	9
MODULES, TOOLS, CURRICULUM & PROJECTS	10
PLACEMENTS/ASSISTANCE, TOP JOBS & COMPANIES	11
FACULTY & INDUSTRY EXPERTS	12
STUDENTS SPEAK & INDUSTRY TESTIMONIAL	13
HOW TO APPLY & FEE STRUCTURE	14
MET ONLINE REGISTRATION PROCESS	15
LIFE AT MET	16
STUDENT PROFILES PGP IN DS & ML	19
CORPORATE RELATIONS TEAM	22
SHARP AT EVERY TURN	23

# MUMBAI EDUCATIONAL TRUST



Mumbai Educational Trust (MET) is a conglomerate of premiere educational institutions, driven by a single-minded focus on imparting quality education, to make students sharp. Training is imparted round-the-clock, seven days a week. Projects and assignments are given utmost importance and students learn on the job. Application-oriented knowledge, garnered in the lecture halls, is applied to industry assignments. The faculty spares no effort to make the students razor sharp, so that they make their mark in the corporate world. No effort has been spared, to create an environment that encourages students, to push the limits of their minds. All this, to help young professionals face the challenges of life. And make their mark in the corporate world.

## **Bhujbal Knowledge City Mumbai**

- Institute of Management
- Institute of Post Graduate Diploma in Management
- Institute of Mass Media
- Asian Management Development Centre
- Centre for Insurance Training, Research & Development
- Institute of Pharmacy
- Institute of Information Technology
- Institute of Software Development & Research

- Institute of Computer Science
- Institute of International Studies
- Rishikul Vidyalaya

## **Bhujbal Knowledge City Govardhan, Nashik**

- School of Architecture & Interior Designing

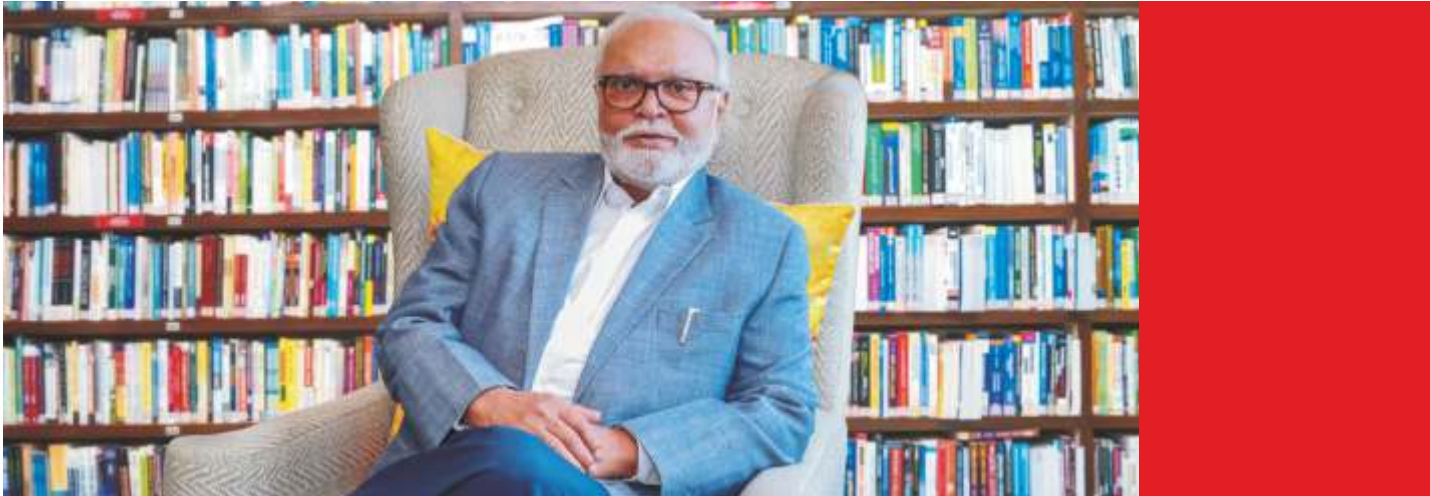
## **Bhujbal Knowledge City Adgaon, Nashik**

- Institute of Management
- Institute of Pharmacy
- Institute of Engineering
- Institute of Technology (Polytechnic)
- Institute of Information Technology
- Institute of D. Pharmacy
- Bhujbal Academy of Science & Commerce (Jr College)
- Meena Bhujbal School of Excellence (CBSE Board)

At MET, over four thousands students and faculty are involved in delivering unique learning systems, through ultra modern infrastructure and academic rigour. MET Institutes are ISO certified, with affiliations to the University of Mumbai, Savitribai Phule Pune University, Directorate of Technical Education, All India Council of Technical Education, MSBTE, Pharmacy Council of India, C-DAC - Ministry of Communications and Information Technology, The Chartered Insurance Institute (CII), London.

MET also has strategic institutional collaborations with the NCC Education, UK.

# FROM THE CHAIRMAN'S DESK



*"The function of education is to teach one to think intensively and to think critically. Intelligence plus character - that is the goal of true education."*

*- Martin Luther King Jr.*

Education stands at a pivotal juncture; a multitude of opportunities are adorning the landscape, yet we must tread the path with caution and certainty. On one hand, we have a long-proven legacy of Indian education that has produced some of the best scholars, scientists, innovators, and CXOs who are making a huge difference across the globe. On the other hand, we are resolute to make significant adjustments to the academic content and delivery that would further enhance the skill, mindset, and expertise levels of the Indian workforce.

We at Mumbai Educational Trust (MET) remain committed to fostering holistic education, nurturing talent, and adapting to meet industry demands. At our three state of the art campuses in Mumbai and Nashik, we house more than 20 institutes and schools. This is where we are developing and deploying learning frameworks that would enable and empower the young generation to impact the horizons.

Let's march forward, united in our pursuit of academic brilliance, corporate success, and societal impact.

**Chhagan Bhujbal**  
Hon. Founder Chairman - MET

# FROM THE TRUSTEE



**“An investment in knowledge pays the best interest”  
- Benjamin Franklin**

Knowledge is power. It doesn't matter what we do, where we are, knowledge is something that no one can take away from us. Once it is acquired it is bound to grow further by pursuing it. Right Education at Right Time paves the way to gain knowledge.

We at MET constantly strive to impart knowledge about emerging technologies and provide students with a platform to develop a variety of skill sets that would help them in making a mark in their career. In today's dynamic and competitive professional environment, adapting to changes, and learning new skills is crucial for survival. It is more important to rise above rest and it is possible only by upgrading Knowledge.

Data Science and Machine Learning are emerging as driving forces in government organizations, businesses, research, science, engineering and more. There is an increasing demand for skilled Data Scientists who can help organizations in better decision making. However, there is a huge gap between Demand and Supply of Data Scientists and Machine Learning experts. In order to bridge this gap and create an industry ready workforce MET has introduced a PGP in Data Science and Machine Learning in association with TCS iON.

We assure you that students will be equipped with the most updated knowledge, practical training and real life case studies. This programme follows a blended learning approach with live interactive online sessions and offline video sessions. We have designed a state of the art Learning Management System for self-paced learning and personalized mentoring. Our objective is to help students to gain knowledge without affecting their existing routine and up skill themselves for better career growth.

I extend a warm welcome to all the students - come, learn, experience and gain knowledge.  
Wishing you all the best.

**Pankaj Bhujbal**

Hon. Trustee

Mumbai Educational Trust

# ADVANTAGE MET

- MET Institute of PGDM ranked 4th Best B-School in Mumbai, India's 33rd Best Pvt. B-School, 21st Best B-School All India and 15th amongst Top West B-Schools by the Times B-School Survey 2024
- Ranked 2nd Best B-School in Mumbai, India's 17th Best Pvt. B-School, 28th Best B-School All India and 14th amongst Top West B-Schools by the Times B-School Survey 2023
- Ranked 4th Best B-School in Mumbai and 14th Best B-School in West Zone by the Times B-School Survey 2021
- MET is recognised as the Best Education Brand 2019 by The Economic Times
- Recipient of the prestigious World Education Awards 2019 for 'Outstanding Institute for Mass Media Management of the Year'
- MET BKC, Nashik student Vishal Satle identified and reported rare bug in SnapChat, a social media app.
- Unity in Diversity Educational Institute Award awarded by Global Dialogue Foundation & United Nations Alliance of Civilizations in 2016
- Centre of Excellence in collaboration with leading Corporates and Academia
- MET is a Ph.D. Research Centre of the University of Mumbai and Savitribai Phule Pune University for Management, Engineering and Pharmacy disciplines
- MET has the best e-enabled state of the art infrastructural facilities
- Focus on delivery of lifelong learning skills to build critical professional competencies
- Futuristic e-driven pedagogy and modules deliver e-commerce, IT and digital skills
- Global internship opportunities
- Research focused faculty
- Outstanding Indian/global industry interface
- Record placements with high salary packages
- Well-networked with the best of corporate in India and abroad
- Sensitising the students towards social causes through MET Seva CSR programmes
- Strong alumni base world over



MET Institute of PGDM ranked 4th Best B-School in Mumbai by the Times B-School Survey 2024.



Mr. Ratan Tata  
Renowned Industrialist



Mr. Ramesh Iyer, MD  
Mahindra & Mahindra Financial Services Ltd



Mr. Anand Rathi  
Founder & Chairman  
Anand Rathi Group



Mr. Motilal Oswal  
Founder, Chairman & MD  
Motilal Oswal Financial Services Ltd.



Mr. Adi Godrej  
Chairman  
Godrej

# ABOUT MET ISDR



The country is at an important juncture. It has completed the transition from a predominantly agrarian economy to a developing economy. It is operating at the leading edge of contemporary technology. A key element in taking the country forward and maintaining its growth momentum will be the highly skilled and competent global professionals.

According to NASSCOM, each year over 3 million graduates and post-graduates are added to the Indian workforce. Of these only 25 percent of technical graduates and 10-15 percent of other graduates are considered employable by the rapidly growing IT and ITES segments.

What we have today is a growing skills gap reflecting the slim availability of high quality resource in India and the galloping pace of the country's service driven economy, which is growing faster than most countries in the world.

Data Science and Machine Learning is a branch aiming to automate the automation in every aspect of life. This has resulted into an increased demand of Data Science and Machine Learning experts. MET ISDR has built a strategic alliance with Top IT companies, to design curriculum as per industry requirements and bridge the Industry academia gap. ISDR is continuously revolutionizing the teaching learning process in order to create an industry ready workforce.

To cater to these needs and bridge the skills gaps as per IT Industry requirements, MET has taken up the mission of developing skilled IT professionals. We are committed to deliver quality education to the IT industry aspirants. MET Institute of Software Development & Research (ISDR), has been specially set up for providing quality IT education to graduates.

MET ISDR envisages to provide customised programmes for corporate houses and promote research in Software Development and Project Management.



# ABOUT TCS iON

## TCS iON

TCS iON is a strategic business unit of Tata Consultancy Services focused on enabling institutions, government departments and organizations from multiple industry sectors to be efficient in their recruitment/admissions process, learning and skilling and overall business operations with the use of 'Phygital' platforms. These are platforms that overlay digital technologies over physical assets. TCS iON delivers this with a unique IT-as-a-Service model that provides easy-to-use, secured, integrated, and hosted solutions in a build-as-you-grow and pay-as-you-use business model. Serving clients with the help of best practices gained through TCS' global experience, deep domestic market exposure along with industry leading technology expertise.



## TCS iON Industry Honour Certification

Machine Learning is an application of Artificial Intelligence (AI) that provides systems the ability to automatically learn and improve from experience without being explicitly programmed.

Machine Learning focusses on the development of computer programs that can access data and learn from it.

The Machine Learning market size is expected to grow from \$1.03 billion in 2016 to \$8.81 billion worldwide by 2022, at a Compound Annual Growth Rate (CAGR) of 44.1% during the forecast period owing to a large number of new job openings.

Machine Learning for Real-World Application is a course that teaches the basic and advanced concepts of Machine Learning supported by industry relevant business case studies. The course uses Python as the programming environment. Datasets required for the case studies can be obtained from the internet. This state-of-the-art course is available for engineering students who aspire to take part in knowledge building and make computers capable of taking intelligent decisions in several areas such as smart home applications, providing bank loans to customers, business analytics including share market predictions, sentiment analysis, security and surveillance, real estate businesses and more.

This course covers the basic and advanced concepts of Machine Learning supported by industry relevant business case studies using an integrated Python programming environment. It helps students get hands-on practice using real-world datasets and understand the applications of machine learning such as sentiment analysis, business analytics and more.

## Learning Objectives

We Provide a platform to gain an in depth understanding data science technologies and equip learners with relevant skills required to work in industry

- 1) Develop Problem Solving and Business Understanding of Data
- 2) Understand and Implement Life Cycle of a Data Science Project
- 3) Foundations of Python and R for Data Science
- 4) Learn and Apply Statistics to solve Data Science problems
- 5) Use Machine Learning Techniques to Solve Real World Problems
- 6) Natural Language Processing and Big Data Analytics
- 7) Design Computer Vision Applications
- 8) Industry Honour Certification from TCS iON
- 9) Industry Projects and Industry Internships

## Eligibility

- 1) Any BE/B Com/B Sc IT/ BCA / Science Graduate
- 2) Any Post Graduate/ Management Graduate
- 3) Working Professionals

# PGP IN DATA SCIENCE & MACHINE LEARNING

MET and TCS iON present

## PGP IN DATA SCIENCE & MACHINE LEARNING

- Hybrid Mode (Online & Offline)
  - Industry Expert Faculty
  - IHC from TCS iON
  - Placement Assistance
  - Cutting Edge Curriculum

The demand for skilled data science professionals in industry, academia, and government is rapidly growing and it's the right time to enter in amazing world of "Data Science and Machine Learning". Businesses are changing rapidly and knowledge driven decision making is crucial to gain competitive advantage. Data Science technologies are acting as an enabler for better decision making and helping in the overall growth of organizations.

Data Science is amalgamation of statistics, computer science and business domain. It deals with in depth analysis of data to gain insights and build wisdom with the help of algorithms and methods. It involves data cleaning, pre-processing, exploratory data analysis and understanding of data. Data Science makes use of machine learning to build and apply various models.

Most of the firms in India and abroad are using Data Science and Machine Learning technologies for better analysis and predictions. There is demand for skilled professional with understanding of Machine Learning algorithms to manage Data Science Projects. Any Graduate be it from engineering, sales or operations background with proficiencies in data analysis and machine learning is suitable for roles such as Data Analyst, Data Administrator, ML Engineer, Data Scientist, Data Architect.

Our Post Graduate Programme in Data Science and Machine Learning follows a project based, practical driven innovative approach to teach cutting edge technologies and methods required in today's competitive job market.

After successful completion of the course, student will be conferred with a Dual Certification:

- 1) PGP Certification from MET Institute of Software Development and Research
- 2) Industry Honour Program Certification from TCS iON.

# THE INDUSTRY PERSPECTIVE

**“Data is Precious thing and will last longer than the system themselves”**

**- Benjamin Franklin**

**“A breakthrough in Machine Learning would be worth ten Microsoft”**

**- Bill Gates - Chairman, Microsoft**

Data Science follows scientific approach to analyse Data. Data Scientists organize and analyse data to extract knowledge which can provide insights for improved decision making and problem solving. Data science incorporates skills from many disciplines such as computer science, management, mathematics, and statistics, which results in a unique skill set desirable for many commercial and government jobs. This has resulted in incredibly strong demand, salaries, and job security for those with these skills.

According to Analytics India Report 2019-2020, the market size for the analytics domain increased to \$45.4 Bn in FY 2021 – a 26.5% growth in the market size over last year when it was \$35.9 Bn. The analytics domain accounts for 23.4% of the Indian IT/ITES market size in 2021. This proportion has increased from the 19.0% share last year. With the current expected CAGRs (21.2% for analytics; 8.1% for IT), the analytics industry will contribute to 41.5% of the IT/ITES market by 2026.

## Job Opportunities

- Estimated 2.3 Million Jobs\*
- Many jobs are vacant
- 44% AI Job openings towered

## Technical Grads

## Indian companies

- More than 75 percent Indian companies
- Increase in investments
- Analytics Share 41.5 %

## New Software

- Data Driven
- All New Software will have built in AI and ML

## Tremendous Growth

- Market to grow by 34 percent (2026)
- Multifold increase in revenue

\*Sources: Analytics India 2024 - 2025 and Gartner Report

The Harvard Business Review has termed Data Science as the “Sexiest Job of the 21st century” stating, “There simply aren’t a lot of people with their combination of scientific background and computational and analytical skills”. According to NASSCOM there is a huge gap between Demand and Supply as far as the Data Science, Machine Learning and Big Data talent is concerned. It has been estimated that professionals with skillset of Data Science and Machine Learning can command huge salaries.

As businesses propose to double and triple their workforces and Indian companies strive to maintain their position in the global marketplace, it has become imperative to prepare and plan for a world-class, competent, talented and innovative workforce.

We, at MET, have taken an initiative for a mission of developing the trained and employable Data Science and Machine Learning experts. We, at MET, are always ahead keeping in pace with changing career trends with single motto of providing world-class education. At MET you will find the right education, in the right setting and environment and personalised attention from experienced faculty members.

**Prof. Omprakash L Mandge**

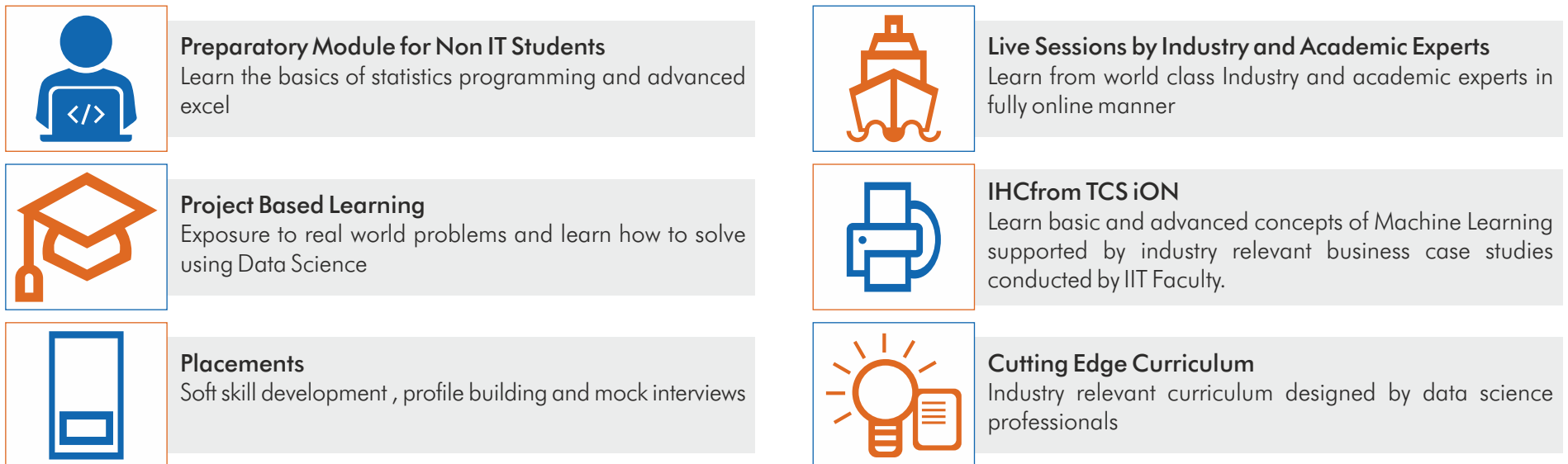
Course Coordinator, MET ISDR

# STRUCTURE OF PROGRAMME & HIGHLIGHTS

## Structure of Program



## Programme Highlights



\* Internship is optional.

# MODULES, TOOLS, CURRICULUM & PROJECTS

## Modules and Tools



## Curriculum

Module 0- Preparatory Course	Module 1 – Data Science Fundamentals	Module 2 and 3 - Machine Learning	Module 4 - Electives
<p>Part A - Foundations of Statistics</p> <p>Part B - Programming Fundamentals</p> <p>Part C - Advanced Excel</p>	<p>Part A - General Concepts of Data Science</p> <p>Part B - Python for Data Science</p> <p>Part C - R for Data Science</p>	<ul style="list-style-type: none"> <li>• Part A - Machine Learning Basics</li> <li>• Part B - Machine Learning Advanced</li> <li>• Part C - Project</li> </ul>	<p>Part A</p> <ol style="list-style-type: none"> <li>1. Big Data Analytics</li> <li>2. Computer Vision</li> <li>3. Natural Language Processing</li> <li>4. Artificial Intelligence</li> </ol> <p>Part B - Project</p>

## Projects

1. Using Regression for Property Prices Analysis and Forecasting
2. Face Recognition using Classification
3. Traffic Signal Image Analysis
4. Caption Generation for Images
5. Sentiment Analysis
6. Translation API System

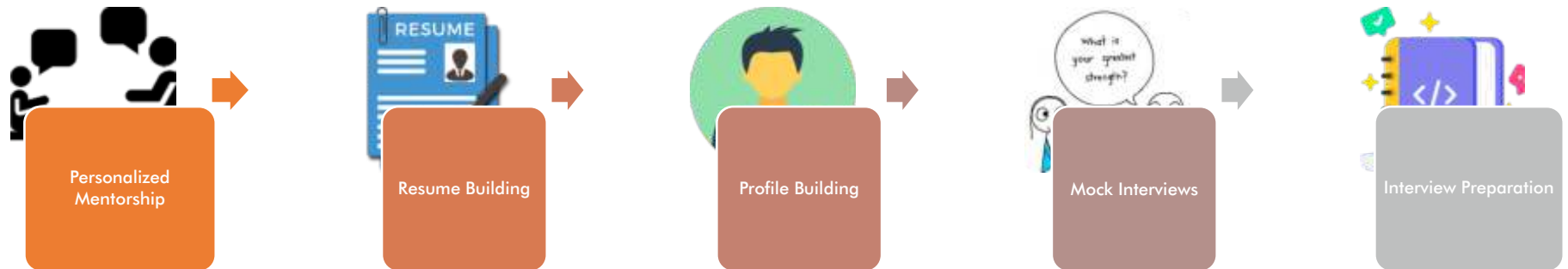
After successful completion of the course, student will be conferred with a Dual Certification:

- 1) PGP Certification from MET Institute of Software Development and Research
- 2) Industry Honour Programme Certification from TCS iON.

# PLACEMENTS ASSISTANCE, TOP JOBS & COMPANIES

## Placements Assistance

MET facilitates all students with placements and internships in all courses. MET has strong alumni of over 25000 students and a strong alliance with more than 200 IT and non IT companies. The placement process follows a systematic approach with personalized mentorship and career assistance.



## Top Jobs in Data Science and Machine Learning

Data Scientist	Data Architect	Machine Learning Scientist	Data Mining Professional	Big Data Consultant
Data Analyst	Data Administrator	Artificial Intelligence Scientist	Machine Learning Expert	Business Analyst
Data Engineer	NLP Scientist	Business Intelligence Analyst	Deep Learning Professional	Chief Data Engineer

## Companies where MET Students work

 Mphasis an HP company	 marico	 Reliance Industries Limited	 Deloitte.	 nielsen	 Capgemini CONSULTING. TECHNOLOGY. OUTSOURCING.
 Cornerstone ON DEMAND Empowering People	 Infosys®	 L&T Infotech	 Tech Mahindra	 TATA TATA CONSULTANCY SERVICES	 wipro

## Companies where MET Students are making a mark:

• Capgemini • TCS • Infosys • Nielsen • Cornerstone Technologies • BNP Paribas • Morgan Stanley • HSBC • Deloitte • Siemens Information Systems • GE Solutions • Godrej Infotech • iGate • Nexgen • Ugam Solutions • BlueStar Ltd • Princeton Blue • General Mills • Accenture • Oracle • Aditya Birla Group • Reliance Industries • L&T Infotech • Tech Mahindra • Wipro and many more

# FACULTY & INDUSTRY EXPERTS

## Faculty & Industry Experts



**Prof. Omprakash Mandge, M.Sc.(CA), PhD\***

Course Coordinator

An enthusiastic programmer with more than 18 years of industry and teaching experience

**Mr. Ashish Verma**

Machine Learning Engineer at Intellect Design Arena



**Mr. Debashis Roy**

Product Manager - TCS

**Mr. Kiran Shinde**

Chief Manager, Aditya Birla Sunlife Insurance



**Dr. Yogesh Karpate**

Founder and CTO, Chistats

Ph.D. (INRIA, France), Visiting Student (Harvard University), MTech. (IIT Bombay), B.E. (University of Pune)

**Dr. Srinivasan R. Iyengar**

Associate Professor at JBIMS, University of Mumbai

Ph.D.



**Ms. Umaima Surti**

Principal Data Scientist, Chistats

B.E (University of Mumbai) University, Masters, Data Science (SimpliLearn)

# STUDENTS SPEAK



PGP in Data Science and Machine Learning is a great course that really got me interested in Data Science. I am a beginner in this field, but MET has simplified the contents in such a way that I could easily understand each and every concept in more simple way. Every live lecture was conducted along with Hands-on experience, which helped to clear concepts and doubt on the spot along with a motivation to work more out of curiosity. I would highly recommend it to anyone curious in learning Data Science and Machine Learning.

- **Mr. Sachin Rasam**

PGP in Data Science and Machine Learning is highly recommended course for those who want to pursue their career Data Science and Machine learning. I am a fresh student in PGP in DS & ML and MET has organized format and syllabus in such a way that I could easily pursue/understand the each learning phase of the course. The sessions that are conducted include detailed explanation of each and every component embedded in that particular session. I would recommend any student who seeks to build his/her career in this field of Data Science and Machine Learning.

- **Mr. Yash Patil**



# INDUSTRY TESTIMONIAL



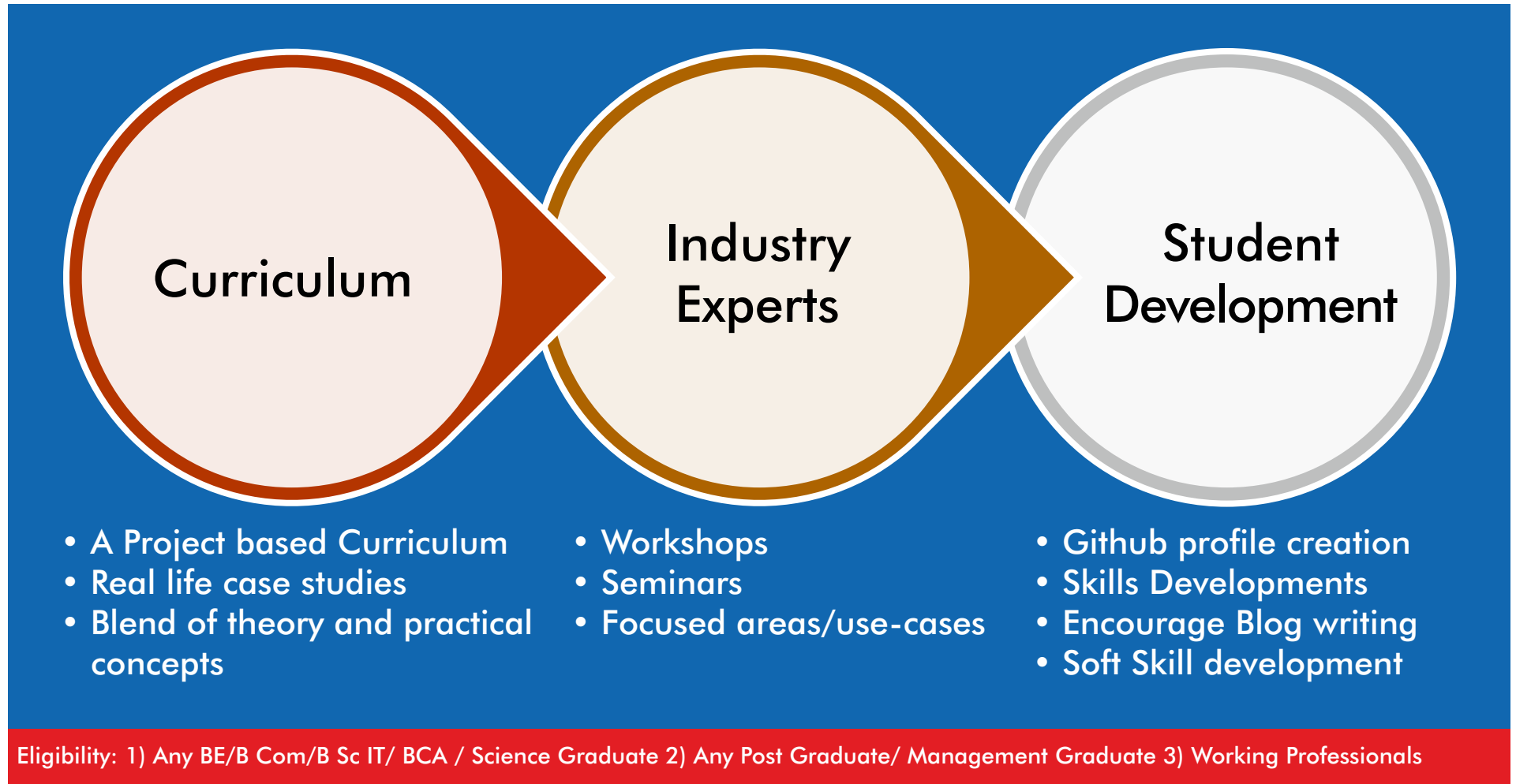
The twenty-first century launched the era of big data and data capitalism, which contains critical knowledge, insights, and capabilities, has become an integral component of all data-based entities. Although big data is a moot point and data science is still in its infancy, this paradigm shift is fuelled by data and all other components that can be created, modified, and/or adjusted through data knowledge, exploration, and utilisation. The following 50 years of data science will identify, discover, explore, and define certain core scientific questions and significant challenges.

PGP in Data Science and Machine Learning is an industry oriented course with live sessions and hands-on exercises. The contents are really awesome and covers a wide variety of topics such as machine learning, computer vision and big data analytics. This course provides a platform to kick-start your career in Data Science and Machine Learning.

**Mr. Pranav Bapat, Advisor, MET ISDR**  
**Data Scientist, AMF Bakery Systems, Netherlands**



# HOW TO APPLY & FEE STRUCTURE



## HOW TO APPLY

### STEP 1

- a) Click 'Apply' button on website and fill respective details
- b) Verify the OTP received and make a non refundable Online Payment of ₹ 600
- c) Login, fill the complete application, upload documents

### STEP 2

Appear for MET Online Selection Procedure on the Scheduled Date & Time

### Selection Procedure

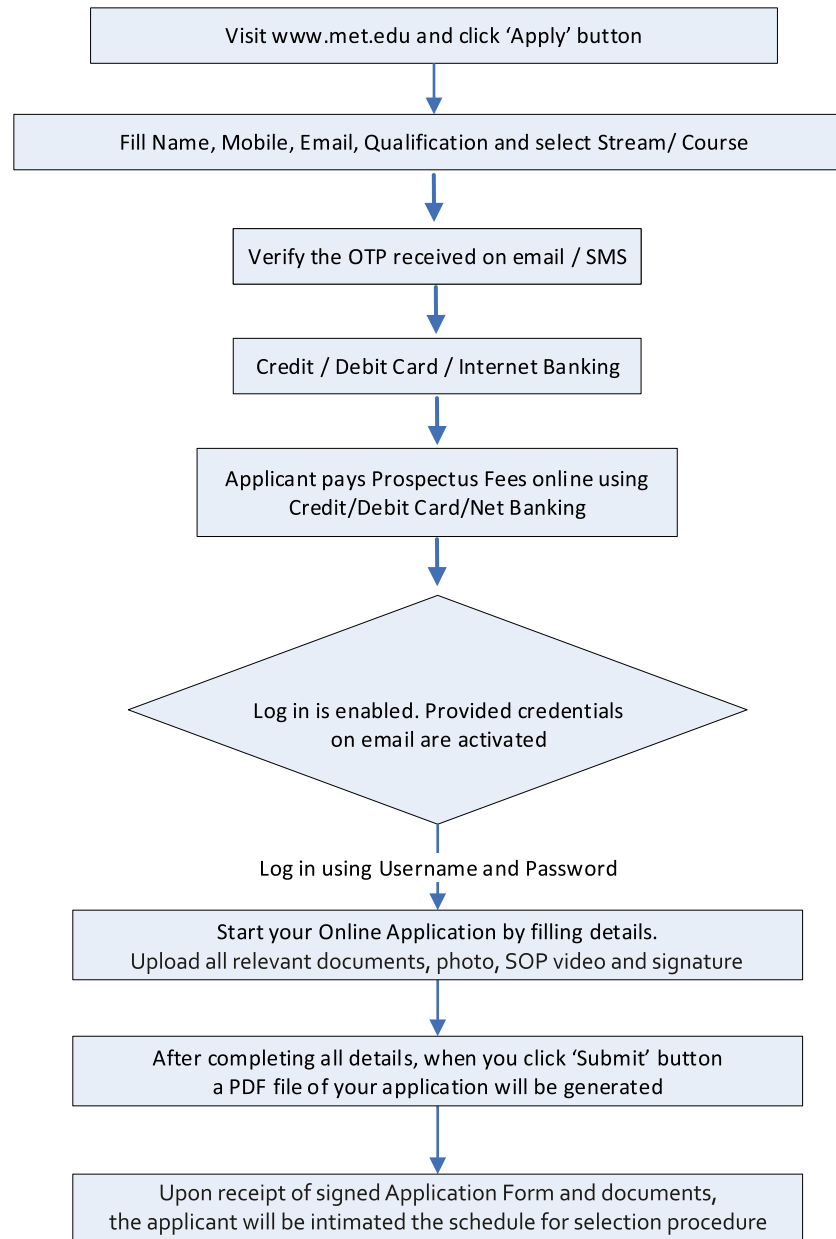
- a) Online Test (General Aptitude + Computer Basics)
- b) Online Personal Interview

### Fee Structure

Fees is ₹ 120000+GST 18 %

(Fees are payable by Credit/Debit Card, Net Banking or A/c payee Demand Draft payable at Mumbai.)

# MET ONLINE REGISTRATION PROCESS



# LIFE AT MET



Dr. Sangeeta Tandon, Director, MET AMDC, Dr. Todor Radev, President, VUM, Varna, Bulgaria and Ms. Christina Armutlieva, Director of International Cooperation, Varna signed the MOU between the two bodies.



A high profile delegation representing Consortium for Global Education (CGE), USA visited Mumbai Educational Trust. Various ideas focussed on learning, student enrichment, research, and experiential exposures during the delegation visit.



Renowned media veteran Mr. Manmohan Shetty, Founder, Adlabs Films Ltd. & Imagica and a delegation from Incube8 and Fractal Picture; with Mr. Pankaj Bhujbal, Trustee, MET during their visit to MET Campus.



MET hosted the zonal round of the 'AIMA National Competition for Young Managers'



Former New Zealand Cricket Team Captain, Mr. Stephen Fleming visited MET. He addressed the audience on team building, leadership and winning in the competitive scenario



Dr. Ramesh Unnikrishnan, Adviser, AICTE, Mr. Atul Bagai, Country Head, UNEP, Mr. Pankaj Bhujbal, Hon. Trustee, MET, Dr. Swati Lodha, Director, MET IOM, Mr. Anirban Ghosh and Mr. Rahul Podar



MET Combat - A Debate Competition on the occasion of National Youth Day.



A panel discussion on "Decoding the Union Budget 2023 Incentives For Startups & MSMEs" under the aegis of PGDM Finance Club.



With a view to connecting the theoretical knowledge gained with the practical application to the real world, the entire batch of eMBA-Insurance visited London for a week



METCONNECT Dubai was organised with an aim to network with corporate houses in Dubai keeping placements in the focus



MET signing up an MOU with the Chartered Insurance Institute, London

# LIFE AT MET



MET PGDM hosted an insightful session on Risk Management by Professor Dr. Thomas B. Berger, Department of Business Engineering, Cooperative State University of Baden - Wuerttemberg, Germany.



Mr. Chhagan Bhujbal, Founder Chairman, MET Dr. G Nagashree, Principal, MET Rishikul Vidyalaya with a delegation from the University of Sunderland, UK.



'Alumni Entrepreneurs Roundtable 2023 - Achieving Problem-Solution Fit & Product-Market Fit' was graced by Alumni, MET, Ms. Sumitra Goenka, Mr. Divyesh Panchal, Mr. Shreyas Patil, Mr. Shubham Singh and Mr. Abhishek Jajoo



'Slavery' - Book written by Mahatma Jyotirao Phule in 1873, dedicated to American struggle against Slavery & Racism, being presented to then US President - Barack Obama by Mr. Chhagan Bhujbal, Chairman - MET



MET students with the tycoon Ratan Tata at the Asia Business Responsibility Summit



Mr. Pankaj Bhujbal, Trustee - MET, felicitating Ma Jianbioo, President, Tianjin University of Technology, China



MET Seva is the dedicated cell for social outreach programmes wherein help is rendered to the under privileged strata of society with students' involvement



MET partnered with the International Delphic council and Delphic Council of Maharashtra to form the Delphic Art Wall at its campus in Bandra that marked the celebration of 28 years of the International Delphic Movement.



Mr. Pankaj Raut, boAt, Mr. Hiren Naik, General Mills India, Mr. Achlesh Vashtit, International Courier Business, Mr. Rojeev Kumar, Boston Ivy Healthcare India, MedikaBazaar, Mr. Manish Gahlout, Boston Ivy, Healthcare India, MedikaBazaar.

**PGP IN  
DATA SCIENCE & MACHINE LEARNING**

# STUDENT PROFILES

## PGP IN DS & ML

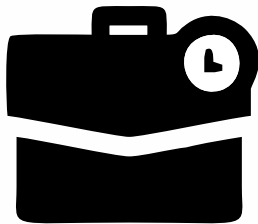
### DS & ML Batch Profile

Age - 23 Avg.

Gender Distribution



### Work Experience (In months)



Freshers	5
12 months to 24 months	2
36 months and above	3

### Educational Background





**Ashish Vazirani**

41, B.Com

**Work Experience**

228 months, Rachna Prints

**Internship**

NA

**Certifications**

AWS Academy Graduate - AWS Academy Machine Learning Foundations, April 2024, Certificate Course in Generative AI with Large Language Models

**Technical Skills**

Python, Machine Learning, MongoDB



**Mansi Bhagore**

22, B.Sc. (Computer Science)

**Work Experience**

5 months, fitness plus

**Internship**

2 months, SAGAR CEMENT PVT LTD

**Certifications**

AWS academy machine learning foundation, certification of geological data training

**Technical Skills**

Python, SQL, MS Power BI, Pandas, Numpy, Mongo DB



**Mihir Mhatre**

21, B.Sc. (Chemistry)

**Work Experience**

NA

**Internship**

NA

**Certifications**

NA

**Technical Skills**

Coding, Graphics Designing



**Mohammed Saad Mullaji**

21, B.Sc. (DS and BI)

**Work Experience**

10 months, New Horizons CDC

**Internship**

NA

**Certifications**

NA

**Technical Skills**

MS Excel, My SQL, MS Power BI



**Narendra Vispute**

20, BCA

**Work Experience**

NA

**Internship**

NA

**Certifications**

AWS Academy Machine Learning Foundation course composition-March 2024, University Learn Python Programming Masterclass with Udemy in-February 2024, Machine learning A - Z: AI, Python & R + ChatGPT Prize in-April 2024

**Technical Skills**

Python, Libraries and Frameworks, My-Sql, Machine learning



**Sameer Ansari**

21, B.Sc. (IT)

**Work Experience**

NA

**Internship**

NA

**Certifications**

Python, SQL, Core Java

**Technical Skills**

Python, R Language, SQL



**Shivani Shetty**

21, B.Sc. (Physics)

**Work Experience**

39 months, Rege Dixit Science Academy

**Internship**

NA

**Certifications**

AWS Academy

**Technical Skills**

Python, SQL, Power BI



**Shrinidhi Shetty**

21, B.Sc. (Maths)

**Work Experience**

39 months, Rege Dixit Science Academy

**Internship**

NA

**Certifications**

AWS Academy Machine Learning Foundations  
AWS Academy

**Technical Skills**

Python, SQL, MS Power BI



**Srijan Dubey**

23, B.Sc. (Physics)

**Work Experience**

NA

**Internship**

NA

**Certifications**

AWS Academy Machine Learning Foundations, NSE Academy Algorithmic Trading using Python, Certificate Program in Financial Markets and Finantech - BSE Inc

**Technical Skills**

Python, MS Power BI, SQL



**Yash Malore**

21, B.Sc. (IT)

**Work Experience**

NA

**Internship**

NA

**Certifications**

Python for beginner and intermediate, AWS Machine Learning Foundations, Excel: Mother of Business Intelligence

**Technical Skills**

Python, SQL, Java



# MET CORPORATE RELATIONS TEAM



## Corporate Relations Team

**Dr. Jyotsna Munshi**

Deputy Director, MET Corporate Relations Department

+91 9136424625/ 022 39554281

Email: [jyotsnam\\_trust@met.edu](mailto: jyotsnam_trust@met.edu)

# SHARP AT EVERY TURN

Take a walk through the wi-fi enabled MET campus with state-of-the-art facilities, and you'll realise what makes it a cut above the rest.



## THE MAGNIFICENT ATRIUM

The atrium sets the tone for the smart, sharp look. The two larger than life steel shafts, a graphic representation of the left and right brain, pierce heavenwards from the atrium. A silent testimony to the might of the sharp mind.

## CONVENTION CENTRE

The hi-tech convention centre, with a seating capacity of 800 people is ideal for seminars, workshops, guest lectures, meets, convocation ceremonies & large functions.

## CONFERENCE ROOMS

Conference rooms all wired up with the latest acoustic, high-end audio visual facilities and learning aids to encourage discussions and debates.

## CLASSROOMS

Audio visual enabled air conditioned classrooms offer wi-fi connectivity to create an international learning ambience.

## COMPUTER LABS

Hi-tech computer labs, fully loaded with the latest software & hardware, host of peripherals & broadband internet connectivity round the clock facilitate learning 24x7.

# SHARP AT EVERY TURN



## PLAYGROUND

Access to internationally designed playground with ultra modern facilities for outdoor games and recreation fosters team building and competitive spirit.

## LIBRARIES

e-Enabled libraries, bursting at the seams with books, magazines, journals, periodicals and digital media on almost every subject. This is complemented with thousands of international online magazines and databases for students to browse through.

## CANTEEN

The vibrant, friendly canteen has a range of tempting and delectable dishes on its menu, making it a students' delight on campus.

## RECREATION CENTRE

An air conditioned recreation centre helps sharp minds unwind. Play at the pool tables, table tennis tables and carom boards.

## MWM

The MET World of Music (MWM) is equipped with touch screen kiosks, headphones and a colossal archive of music - the only fully loaded digital music centre in any campus.

## FACULTY ROOMS

Guest rooms with modern amenities play host to visiting faculty and dignitaries.

BHUJBAL KNOWLEDGE CITY



मुंबई एज्युकेशनल ट्रस्ट

MUMBAI EDUCATIONAL TRUST

Best Study Management  
Exam Training  
School/College  
Competitive Exams  
Placement  
Interview  
Skill Development  
Lifelong Development  
100% Success Guarantee  
100% Satisfaction  
100% Results

**MET**  
MUMBAI EDUCATIONAL TRUST

**WE  
MAKE  
MINDS  
SHARP**

THE MET LEAGUE OF COLLEGES

**MET**

AS SHARP AS YOU CAN GET



# **MET**

## **Bhujbal Knowledge City**

**MET INSTITUTE OF  
SOFTWARE DEVELOPMENT AND RESEARCH**

Bandra Reclamation, Bandra (W), Mumbai 400 050.

Tel: (+91 22) 39554270/37/22/69/09/383

Mob: 9136424625/86558 20699/7400485594/

8655945038/7738606572/9892667671

Email: [placement\\_ics@met.edu](mailto:placement_ics@met.edu) | [www.met.edu](http://www.met.edu)